

## **Forwarding Department**

*If it can be moved We can take it*

EFGLOBAL is a forwarding company specialized in providing innovative and customized logistic solutions to its customers.

EFGLOBAL offers multi-modal transportation services in the distribution of ship spares worldwide.

Every time frame and deadline is treated as a top priority and EFGLOBAL will strive to meet its clients demands in order to achieve a long-term and successful relationship.

We can assure you that your freight will arrive intact and on time. With EFGLOBAL being the point of contact, clients can benefit from quality service, end to end transparency of all ship spares and competitive pricing.

**You can rest assured that EFGLOBAL will:**

- Track and trace your consignment
- Inform you of any delay or route deviation
- Adopt a pro-active communication with clients
- Provide the logistics solution best suited to your needs.

By understanding your business and our customer requirements, EFGLOBAL can guarantee and fulfill your transportation needs through its global delivery network, whether it concerns low, medium or high priority time frames.

**Our services include:**

### **ON BOARD DELIVERY**

**O.B.D.** (on board delivery) has become an essential service in the Marine Industry and having ship spares delivered on board drastically simplifies the customer's involvement. Working only with reputable transportation companies EFGLOBAL can deliver OBD



### **ROAD TRANSPORTATION**

Both domestic and international services are of option regarding a full truck or Groupage to any desired destination.



### **SEA FREIGHT**

At EFGLOBAL we strive to make every aspect of Sea Freight as easy as possible, from the early stage of ordering to document management and freight tracking. EFGLOBAL can deliver on schedule at competitive rates worldwide.



### **AIR FREIGHT**

We will assist in any way possible in the coordination of international airfreight consignments resulting in a timely and cost effective solution.

### **CUSTOMS CLEARANCE**

To reduce cargo delays and costs associated with non-compliance to customs regulations, EFGLOBAL has sub-contracted the most qualified personnel to complete the task successfully and on time.

### **STORAGE**

EFGLOBAL can provide warehousing solutions with up-to-date storage systems and tight security measures.

**Primary Business Address**  
Ekavis 4  
16672 Vouliagmeni  
Athens, Greece

Tel : +30 210 9625730  
Tel 2: +30 210 9625770  
Fax: +30 210 9625756  
E-mail: info@efglobal.gr  
E-mail 2: operations@efglobal.gr

URL: <http://www.efglobal.gr>



Marine Consulting  
Risk Assessment and PMS  
Software Development



Forwarding Solutions



## EFGLOBAL MARINE CONSULTING

EFGLOBAL Marine Consulting offers a wide range of safety, security, environmental and quality consulting services directed at assisting shipping companies to develop and maintain user friendly and effective management systems.

### EFGLOBAL's reliable and competitive services include:

- Consulting Services
- ISM/Safety Systems Consulting
- ISO 14001/Environmental Systems Consulting
- ISO 9001/Quality Systems Consulting
- ISPS/Security Consulting
- Risk Management Consulting
- MLC 2006 (ILO)
- Office & Shipboard Audits
- Systems Maintenance Services
- Office & Shipboard Training on Safety/Security/Risk

### Manuals/Documents Development

- ISM/ISO 9001/ISO 14001 Systems
- Ship Security Plans
- SOLAS Maintenance Training Manuals
- Crew Familiarization Booklets

### Software Solutions

- Marine Risk Assessment Electronic Program
- Marine PMS & ISM Control Electronic Program

### Other Services

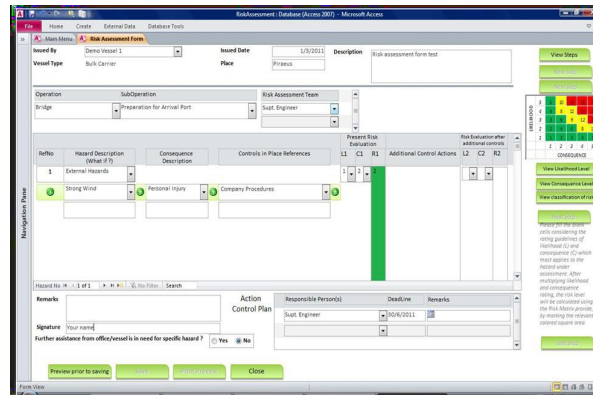
- Representation of reputable shipyards and repair facilities
- Representation of class approved underwater maintenance companies

Ekavis 4  
16672 Vouliagmeni  
Athens, Greece

Tel : +30 210 9625730  
Tel 2: +30 210 9625770  
Fax: +30 210 9625756  
E-mail : [consulting@efglobal.gr](mailto:consulting@efglobal.gr)  
E-mail: [info@efglobal.gr](mailto:info@efglobal.gr)

URL: <http://www.efglobal.gr>

## EFGLOBAL RISK ASSESSMENT SOFTWARE



### User friendly and effective electronic program developed on the following architecture:

Selection of Operation/Activity-Definition of Participants-Hazard Identification-Consequence Categorization-Description of Existing Control Measures-Risk Evaluation-Incorporation of Additional Control Measures-Action Plan Set Up - Emergency/Contingency.

### The program covers:

- All routine and non-routine key shipboard operations
- Safety management activities undertaken by office personnel
- Activities of suppliers, sub-contractors, visitors & others

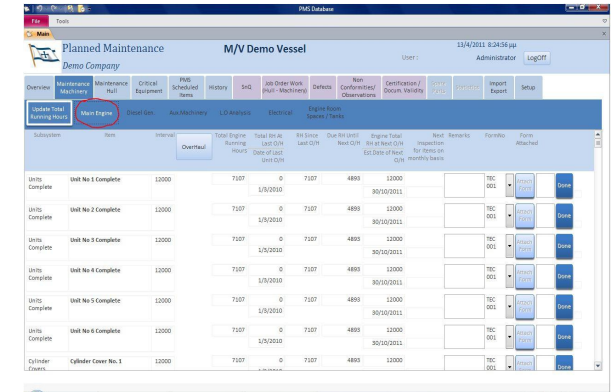
### The program includes:

- A library of completed risk assessment worksheets exceeding the 100 tasks
- Possibility to incorporate Company's documented forms
- The functions of "copy" and "edit" already existing in the library reports
- Possibility of interaction between ship-office & vice versa
- Import/export function from ship to office & vice versa
- A built-in Database User's Guide detailing the use and handling of the program

### The program offers to user the functions of:

- Experience feed back library for valuable/interesting assessments
- External library to store desired data/information
- Sub-operation revision status to monitor Company's documented forms

## EFGLOBAL PMS & ISM CONTROL SOFTWARE



### A user friendly and effective electronic program which:

- Ensures efficient maintenance work is carried out in accordance with company & industry regulations
- Keeps note of running hours and next scheduled date for machinery maintenance
- Displays maintenance jobs making easy to attain the full overview of upcoming, due and overdue jobs
- Gives an accurate figure of the maintenance schedule nearing or overdue
- Helps preventing any kind of mishap due to poor maintenance
- Monitors the expiration dates of ship's documents / certificates
- Incorporates the Company's relevant forms

### The program enables user to:

- Comment against each job carried out
- Submit completion of job which automatically reschedules the next maintenance date
- Monitor the history of already done jobs with relevant details
- Transfer the planned maintenance database from ship to office & vice versa
- Use the built-in PMS/ISM User's Guide

### The program covers the following activity areas:

- Overview (Overdue Items)
- Maintenance Machinery (ME-DGs-Aux-Electrical)
- Maintenance Hull/Deck Eq/Accommodation
- Critical Equipment (Engine-Deck-LSA/FFE)
- PMS Scheduled Items (Overdue-Monthly-Quarterly-Scheduled Planning)
- History (Item History Log)
- S & Q (ISM Engine-ISM Deck-Drills)
- Job Orders Work (Hull-Machinery)
- Certification/Documentation Validity (Overdue-Expired in 2 Months)